



**PUNZONADORA HIDRAULICA**  
**HYDRAULIC IRON WORKER**  
**POINÇONNEUSE HYDRAULIQUE**


**MX700**





 Punzonadora Multifunciones MX700 Nargesa de 70 toneladas. Su escote, longitud de carrera y amplia mesa de trabajo la convierten en una herramienta muy versátil: Agujerea, pliega, corta, embute... [+info](#)

 All purpose ironworker MX700 Nargesa more than 70 tons. Its neck, displacement and wide working table turn it into a very versatile tooling: It pierces, folds, cuts, inlays... [+info](#)

 Cisaille poinçonneuse MX700 Nargesa de 70 tonnes. Son col-de-cygne, sa longueur de course et sa large table de travail en font un outil à emplois variables: elle troue, plie, coupe, emboutit.. [+info](#)

Por favor, rellene el siguiente formulario. Nos pondremos en contacto en menos de 24h. Días laborables

*Please fill up the following form. We will contact you in less than 24 hours. Working days.*

*S'il vous plaît remplir le formulaire. Nous nous mettrons en contact avec vous en moins de 24h. Jours ouvrables.*

**PEDIR PRESUPUESTO  
A MEDIDA**

**REQUEST ADJUSTED  
QUOTATION**

**DEMANDE DE DEVIS  
PERSONNALISÉ**

## NUESTRA GAMA DE PUNZONADORAS OUR RANGE OF PUNCHING MACHINES · NOTRE GAMME DE POINÇONNEUSES

Puede consultar todas las características de nuestra gama de punzonadoras  
*You can checkup all features for all our range of punching machines*  
*Vous pouvez consulter toutes les caractéristiques de notre gamme de poinçonneuses*

**MAS  
INFORMACIÓN**

**MORE  
INFORMATION**

**PLUS  
D'INFORMATION**



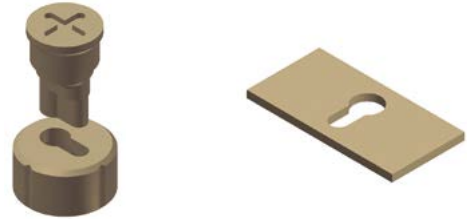
**La punzonadora MX700** va equipada con el útil de punzonado, con un punzón y una matriz redonda a elegir de 3 a 28mm.  
**Hydraulic iron worker MX700** are equipped with one set of round punch and die to his choice from 3 to 28mm.  
**La poinçonneuse hydraulique MX700** est équipé du matériel utile pour le poinçonnage, avec un poinçon et une matrice ronde au choix de 3 à 28mm.

DIMENSIONES CALCULADAS CON MATERIAL DE 45 Kg  
 CALCULATED DIMENSIONS WITH 45 Kg MATERIAL  
 DIMENSIONS CALCULÉ AVEC MATÉRIEL A 45 Kg

Grueso del material (mm) · Material thickness · Grosseur de matériel	25	10	8	5
Punzón redondo (mm) · Round punch · Poinçon rond	26	60	70	100
Punzón cuadrado (mm) · Square punch · Poinçon carré	19	47	55	70

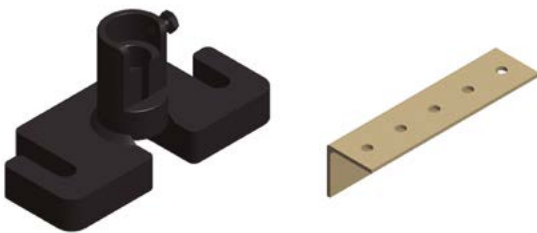


Punzones y matrices (de série · standard)



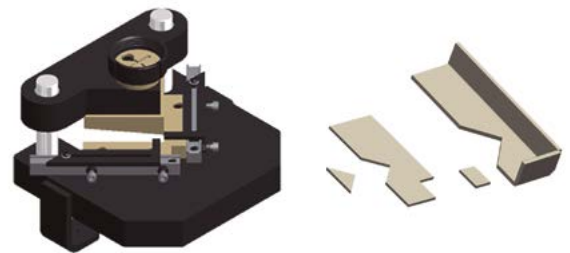
Punzón y matriz de bombín  
 Locks punch and die  
 Poinçon et matrice de serrure

REF: 140-02-01-00036



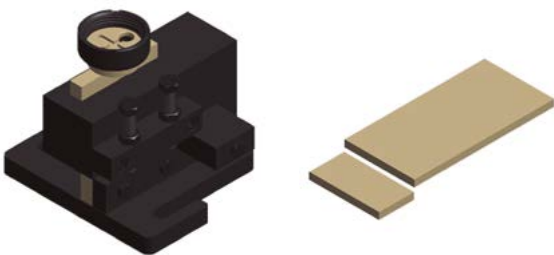
Matriz para agujerear ángulo y perfil U  
 Angle & U profile punching tooling  
 Matrice pour percer des cornières et des profilés U

REF: 140-02-01-00031



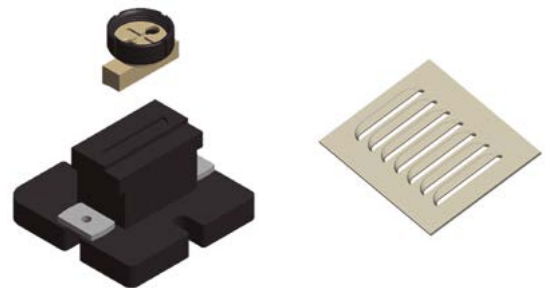
Matriz de despuntar a 90º regulable 150x150  
 Stripping tooling to 90º adjustable 150x150  
 Matrice d'encoche à 90º réglable 150x150

REF: 140-02-02-00001



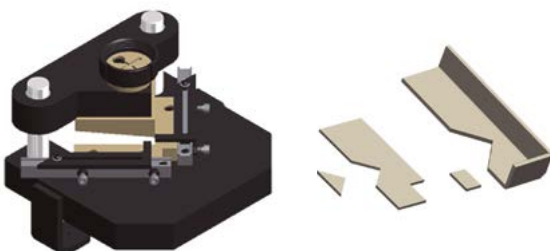
Matriz de cortar pletina 200x20  
 Flat bar cutting tooling 200x20  
 Matrice pour couper des platines 200x20

REF: 140-02-02-00002



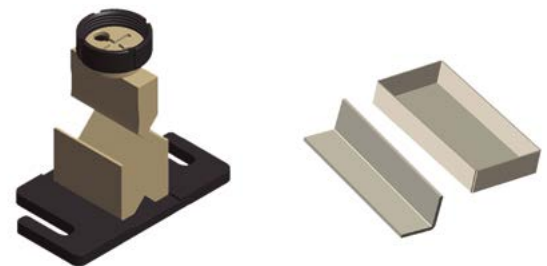
Matriz rejilla ventilación  
 Ventilation grip tooling  
 Matrice pour grilles de ventilation

REF: 140-02-02-00031



Matriz de despuntar a 90º regulable 100x100  
 Stripping tooling to 90º adjustable 100x100  
 Matrice d'encoche à 90º réglable 100x100

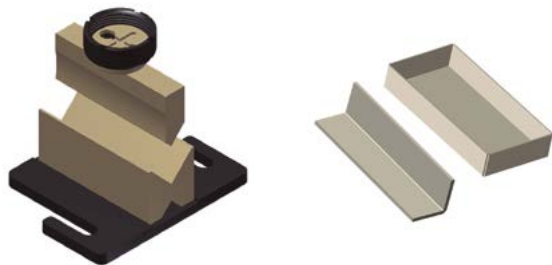
REF: 140-02-02-00032



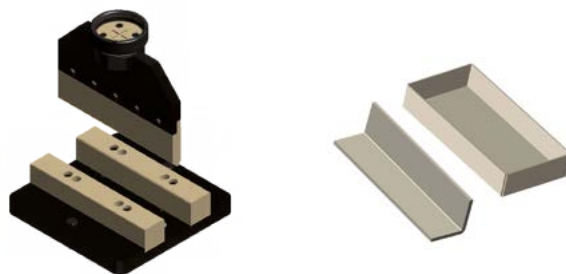
Matriz de plegar 100mm  
 Folding tooling 100mm  
 Matrice de pliage 100mm

REF: 140-02-02-00033

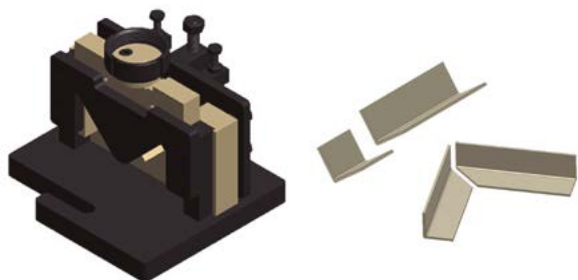




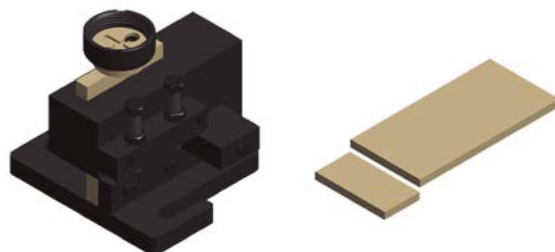
Matriz de plegar 170mm  
Folding tooling 170mm  
Matrice de pliage 170mm  
REF: 140-02-02-00034



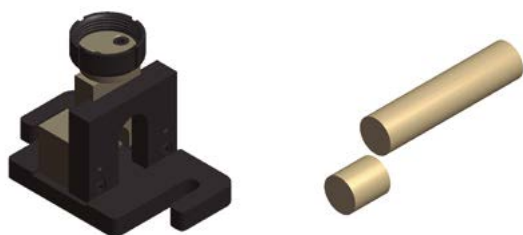
Matriz de plegar 350mm  
Folding tooling 350mm  
Matrice de pliage 350mm  
REF: 140-02-02-00043



Matriz de cortar ángulo  
Angle cutting tooling  
Matrice à couper des cornières  
REF: 140-02-02-00036



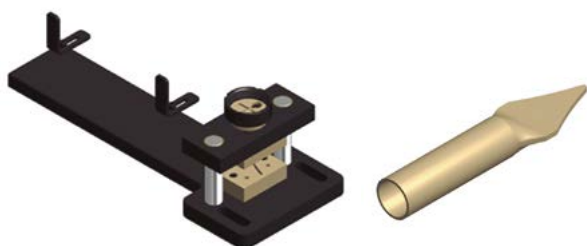
Matriz de cortar pletina 100x12  
Flat bar cutting tooling 100x12  
Matrice pour couper des platines 100x12  
REF: 140-02-02-00037



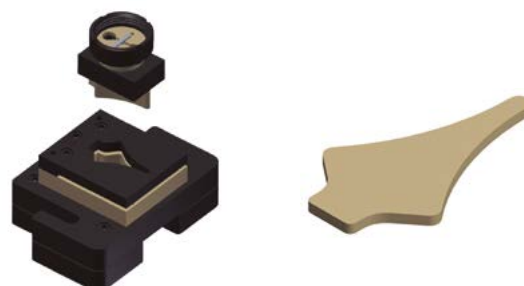
Matriz de cortar barra redonda  
Round bar cutting tooling  
Matrice pour couper des barres rondes  
REF: 140-02-02-00038



Matriz tornapuntas para tubo de valla  
Fence post end tooling  
Matrice pour aplatiser et percer un tube de clôture  
REF: 140-02-02-00039



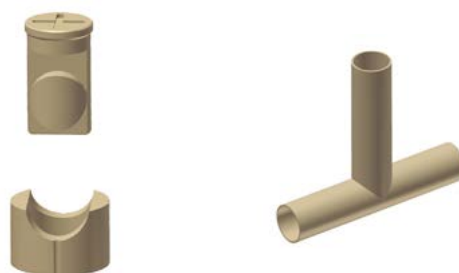
Matriz de flechas para tubo  
Arrow tooling for pipes  
Matrice pour flèches en tuve  
REF: 140-02-02-00040



Matriz de flechas en chapa  
Arrow tooling for metal sheet  
Matrice pour flèches en tôle  
REF: 140-02-02-00041



Extractor enderezador  
Flattening tooling  
Extracteur redresseur  
REF: 140-02-02-00042



Matriz de abocardar  
Tube notching tooling  
Outillage grugeage



